

MAINTENANCE:

Your MC-10 requires no maintenance.

Product Limited Warranty

All Labelmate Products are warranted to the original end-user customer to be free from defects in materials and workmanship. If it is determined by Labelmate that a product has failed under the terms of this warranty, the product will be repaired or replaced at no charge to the customer. Labelmate reserves all rights to determination of coverage and liability under this warranty. The warranty period for all new Labelmate products is outlined below:

Warranty Period	Products Covered
5 years	Label Rewinders Label Unwinders
3 years	Label Counters (mechanical parts only) Label Slitters (mechanical parts only) Label Dispensers Printer Mechanisms
1 year	Power Supply Modules Counter modules Encoders Any products not specified above.

The warranty period for all products starts on the date purchased by the original end-user customer. Warranty coverage is not transferable with ownership and will terminate immediately upon rental, resale or any other change in ownership. This warranty does not cover repair to any product which is damaged, has been modified, is missing parts, or has been opened or repaired by any unauthorised person. Use of any unauthorised accessory or attachment will void coverage. Purchase documentation should be retained for coverage verification.

In the event your product requires service, please contact the distributor you bought the product from. The customer assumes responsibility for all cost and risk incurred in transport for service.

Labelmate makes no other warranty of any kind expressed or implied, or to suitability or fitness for a particular purpose. No other person, agent or reseller is authorised to give any warranties on behalf of Labelmate. Any obligation to warranty other than that specifically addressed above is hereby disclaimed.



Labelmate
Chaussée de Ruisbroek 290
1620 Drogenbos (Belgium)

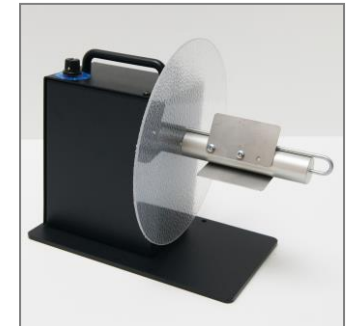
+32 2 375 69 60
brussels@labelmate.com
BTW BE 0674 877 993

ING BELGIUM
IBAN BE89 3630 6607 1285
BIC BBRUBEBB

labelmate.com

MC-10

MINI-CAT Label Rewinder



- **Switched Bi-Directional Control.**
- **Constant Adjustable Torque™ "CAT" Technology.**

Remove all parts from the shipping container and verify contents.

PACKAGE CONTENTS:

- *User Manual (this document)*
- *MC Rewinder Unit*
- *Shaft Assembly with Flange, Vanes and Bail*
- *Power Supply Module*

Retain the Shipping Container and Packaging for Storage and Transport

SPECIFICATIONS:

Weight of the machine: 5,6Kg
Max. Label Roll Weight: 3Kg.
Max. Label Roll Diam.: 220mm.
Start/Stop: ON/OFF/ON Direction Switch
Power Supply: Input: 220-240VAC – 50-60Hz.
Output: 15VDC.



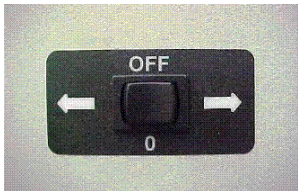
WARNING!
This Product is for indoor use only.
Not for use in wet locations.

IMPORTANT INFORMATION:

- This product is a label rewinder. It is only to be used to rewind labels of the recommended dimensions and weight in an indoor, dry environment.
- The machine has to be unplugged before any manipulation.
- The machine is to be used on a flat surface, if the surface is not flat, it is to be fixed using the holes in the base plate.
- Do not leave the power cable in a passageway.
- The ambient light of the working area needs to be sufficient to avoid any risk.
- The rewinder can be used in ambient temperatures of +2°C to 40°C.
- Connection of the machine to the power source must respect local and European legislations.

SET-UP:

1. Place the MC-10 with the Rewind Shaft perpendicular to the web of the labels to be rewound, and near where the labels come out of the printer. The MC-10 is bi-directional, so can be operated in either direction.
2. Verify that the (ON/OFF/ON) Switch on the rear of the Unit is in the OFF (0) position.
3. Insert the Power Cord into the Power Socket on the rear of the MC-10.
4. Plug the AC/DC Adapter into a suitable electrical outlet. It can be left plugged in at all times.
5. The MC-10 has a combination Power and Direction (ON/OFF/ON Direction) Switch on the Rear Panel. See photo below. The Centre Position of the Switch is "OFF" (0). To make the Rewinder run to the right (looking from the rear of the Rewinder), press the Power / Direction Switch in the direction of the right arrow. To make the Rewinder run to the left, press the Power / Direction Switch in the direction of the left arrow.



FOR YOUR SAFETY:
Switch off device before any manipulation.

REWINDING LABELS:

Rewind Directly "On-Shaft" ("coreless")

1. Slide the hook-shaped metal Bail onto the MC-10 Shaft. The straight end goes into the hole in the plastic Flange Plate. The curved end fits into the small hole in the outer end of the Shaft.
2. Insert the label web under the Bail and turn the Rewind Shaft by hand to secure the labels.
3. Place the MC-10 (ON/OFF/ON Direction) Switch to the ON position in the desired direction of operation, left or right.
4. Start the printer and observe that the labels are being rewound correctly. You can adjust the speed/torque by turning the potentiometer on the upper part of the machine to provide more, or less, rewind force as desired.
5. When rewinding is finished, place the MC-10 (ON/OFF/ON) Switch in the OFF (0) position.
6. To remove the labels, first pull out the hook-shaped Bail from the centre of the label roll. Then remove the labels.

Rewind on a Cardboard Core

1. To use a cardboard core, install the 3-stainless steel Fins (Vanes) onto the Rewind Shaft of the MC-10 using the 6-screws provided. For narrow cores, orient the Fins next to the plastic Flange. Slide an empty cardboard core over the Fins and up against the plastic Flange Plate.
2. Use a piece of masking tape to secure the label web to the cardboard.
3. Place the MC-10 (ON/OFF/ON Direction) Switch to the ON position in the desired direction of operation, left or right.
4. Start the printer and observe that the labels are being rewound correctly. You can adjust the speed/torque by turning the potentiometer on the upper part of the machine to provide more, or less, rewind force as desired. When rewinding is finished, place the MC-10 (ON/OFF/ON Direction) Switch in the OFF (0) position.
5. Slide the cardboard core and the labels off the MC-10.

